



Nori® Rat S100B ELISA Kit DataSheet

S100 calcium binding protein B (S100B) is a protein of the S-100 protein family. S100 proteins are localized in the cytoplasm and nucleus of a wide range of cells, and involved in the regulation of a number of cellular processes such as cell cycle progression and differentiation. S100B is glial-specific and is expressed primarily by astrocytes, but not all astrocytes express S100B. It has been shown that S100B is only expressed by a subtype of mature astrocytes that ensheath blood vessels and by NG2-expressing cells.^[1] This protein may function in neurite extension, proliferation of melanoma cells, stimulation of Ca²⁺ fluxes, inhibition of PKC mediated phosphorylation, astrocytosis and axonal proliferation, and inhibition of microtubule assembly. In the developing CNS it acts as a neurotrophic factor and neuronal survival protein. In the adult organism it is usually elevated due to nervous system damage, which makes it a potential clinical marker. Chromosomal rearrangements and altered expression of this gene have been implicated in several neurological, neoplastic, and other types of diseases, including Alzheimer's disease, Down's syndrome, epilepsy, amyotrophic lateral sclerosis, melanoma, and type I diabetes. It has been suggested that the regulation of S100B by melittin has potential for the treatment of epilepsy. Serum levels of S100B increase in patients during the acute phase of brain damage. S100B levels have been reported to rise prior to any detectable changes in intracerebral pressure, neuroimaging, and neurological examination findings. Thus, the major advantage of using S100B is that elevations in serum or CSF levels provide a sensitive measure for determining CNS injury before gross changes develop, enabling timely delivery of crucial medical intervention before irreversible damage occurs. S100B serum levels are elevated before seizures suggesting that BBB leakage may be an early event in seizure development.^[2] An extremely important application of serum S100B testing is in the selection of patients with minor head injury who do not need further neuroradiological evaluation, as studies comparing CT scans and S100B levels have demonstrated S100B values below 0.12 ng/mL are associated with low risk of obvious neuroradiological changes.^[3] In addition, S100B, which is also present in Rat melanocytes, is a reliable marker for melanoma malignancy both in bioptic tissue and in serum.^{[8][9]}

References

1. Wang DD, Bordey A (2008). *Prog. Neurobiol.* **86** (4): 342–67.
2. Marchi N, et al. (2007). *Epilepsia* **48** (4): 732–42.
3. Zongo, D., et al. (2012). *Annals of Emergency Medicine* **59** (1): 209–218.
4. Michetti F, et al. (2012). *J. Neurochem.* **120** (5): 644–59.
5. Cocchia D, et al. (1981). *Nature* **294** (5836): 85–7.

PRINCIPLE OF THE ASSAY

This kit is for quantification of S100B in Rat. This is a quick ELISA assay that reduces time to 50% compared to the conventional method, and the entire assay only takes 3 hours. This assay employs the quantitative sandwich enzyme immunoassay technique and uses biotin-streptavidin chemistry to improve the performance of the assays. An antibody specific for Rat of S100B has been pre-coated onto a microplate. Standards and samples are pipetted into the wells and S100B is bound by the immobilized antibody. After washing away any unbound substances, a detection antibody specific for Rat of S100B is added to the wells. Following wash to remove any unbound antibody reagent, a detection reagent is added. After intensive wash a substrate solution is added to the wells and color develops in proportion to the amount of S100B bound in the initial step. The color development is stopped, and the intensity of the color is measured.

This package insert must be read in its entirety before using this product.

Storage Store at 4 °C. The kit can be used in 6 months.



Nori® Rat S100B ELISA Kit DataSheet

MATERIALS PROVIDED

Description	Quantity	Description	Quantity	Description	Quantity
Antibody Precoated Plate	1	20 x PBS	1	Substrate Solution	1
Detection Antibody	1	20 x Assay Buffer	1	Stop Solution	1
HRP Conjugate	1	96-well plate sheet	1	DataSheet	1
Standard	3				

Bring all reagents to room temperature before use.

Reagent Preparations

Rat S100B Detection Antibody (1 vial) – The lyophilized Detection Antibody should be stored at 4°C for up to 6 months, if not used immediately. Centrifuge for 1 min at 6000 x g to bring down the material prior to open the vial. The vial contains sufficient Detection Antibody for a 96-well plate. Add 200 µL of sterile 1 x PBS and vortex 30 sec. If the entire 96-well plate is used, take 200 µL of detection antibody to 10.5 mL of 1 x PBS to make **Working dilution of detection antibody** and vortex 30 sec prior to the assay. If the partial antibody is used store the rest at -20°C until use.

Rat S100B Standard (3 vials) – Each lyophilized Rat S100B Standard vial contains the standard sufficient for generating a standard curve. The unreconstituted standard can be stored at 4°C for up to 6 months if not used immediately. Centrifuge for 1 min at 6000 x g to bring down the material prior to open the tube. Add 500 µL of 1 x Assay Buffer to make the high standard concentration of 3600 pg/ml and **vortex for 1 min**. A seven-point standard curve is generated using 2-fold serial dilutions in the Assay Buffer, **vortex 30 sec** for each of dilution step.

HRP Conjugate (55 µl) – Centrifuge for 1 min at 6000 x g to bring down the material prior to open the vial. The vial contains 55 µL HRP Conjugate sufficient for one 96-well plate. If the volume is less than 55 µL, add sterile 1 x PBS to reach 55 µL and vortex 10 sec. Make 1:200 dilutions in 1 x PBS. If the entire 96-well plate is used, add 53 µL of HRP Conjugate to 10.5 mL of 1 x PBS to make **working dilution of HRP Conjugate** and vortex 30 sec prior to the assay. The rest of undiluted HRP Conjugate can be stored at 4°C for up to 6 months. **DO NOT FREEZE.**

20 x PBS, pH 7.3, 25 mL- Dilute to 1 x PBS with deionized distilled water and mix well prior to use.

20 x Assay Buffer, 20 mL- Dilute to 1 x Assay Buffer with 1 x PBS prior to use.

Substrate Solution, 10.5 mL.

Stop Solution, 5.5 mL.

Sample types: Plasma, serum, cell/tissue lysates, cell culture supernatant, synovial fluid (SF), bronchoalveolar lavage (BALF), cerebrospinal fluid (CSF), urine, other biological fluid.



Nori® Rat S100B ELISA Kit DataSheet

Assay Procedure

1. All procedures are conducted at room temperature (20-25 °C) and ensure **equal pipetting/dispensing** at each step and remove air bubbles in the wells for all steps.
2. Lift the plate cover and cover the unused wells or reseal the unused strips in the aluminum bag with desiccant at 4 °C. **Vortex the standards and samples for 10 sec** before applying to the plate. Add 100 µL of **sample** or **standard** per well and use duplicate wells for each standard or sample. Cover the 96-well plate and incubate for **2 hours**. Attention: **MUST vortex standards and samples for 10 sec before pipetting to the wells!**
3. Aspirate each well and wash with 300 µL of **1 x Assay Buffer** for two times. Wash by filling each well with 1 x Assay Buffer using a multi-channel pipette, manifold dispenser, squirt bottle or auto-washer. Complete removal of liquid at each step is essential for good performance. After the last wash, remove any remaining Assay Buffer by aspirating or by inverting the plate and blotting it against clean paper towels.
4. Add 100 µL of the **working dilution of Detection Antibody** to each well. Cover the plate and incubate for 1 hour.
5. Repeat the aspiration/wash as in step 3.
6. Add 100 µL of the **working dilution of HRP Conjugate** to each well. Cover the plate and incubate for 20 minutes. Avoid placing the plate in direct light.
7. Repeat the aspiration/wash as in step 3 but **wash 4 times** instead.
8. Add 100 µL of **Substrate Solution** to each well and observe the color development every 1-2 mins. Incubate for up to **30 minutes (depending on signal. Stop** the reaction when it turns to dark blue in the highest standard wells). Over-incubation of the substrate will result in overflow of high standard and thus should be avoided. Avoid placing the plate in direct light.
9. When it gets to dark blue in the highest concentration of standard wells, add 50 µL of **Stop Solution** to each well to stop the reaction. Gently tap the plate to ensure thorough mixing.
10. Determine the optical density of each well immediately, using a validated microplate reader set to 450 nm. If wavelength correction is available, set to 540 nm or 570 nm. If wavelength correction is not available, subtract readings at 540 nm or 570 nm from the readings at 450 nm. This subtraction will correct for optical imperfections in the plate. Readings made directly at 450 nm without correction may be higher and less accurate.

Sample dilution: If high density is expected, samples should be diluted with equal volume of 1 x Assay Buffer and **vortex for 1 min** prior to assay. If the OD value still exceeds the upper limit of the standard curve, further dilution is recommended till it falls in the detection range and the dilution factor must be used for calculation of the concentration.

Precaution and Technical Notes

1. It is critical to follow the procedure step by step otherwise appropriate color development may not occur as expected and make sure no air bubbles in wells before adding reagents.
2. A standard curve should be generated for each set of samples assayed. Thorough mixing of standards at each of dilution steps is critical to acquire a normal standard curve and **vortex again (10 sec) before pipetting to the 96-well plate.**
3. HRP Conjugate contains enzyme, DO NOT mass up with Detection Antibody.
4. The Stop Solution is an acid solution, handle with caution.
5. This kit should not be used beyond the expiration date on the label.
6. A thorough and consistent wash technique is essential for proper assay performance.
7. Use a fresh reagent reservoir and pipette tips for each step.
8. It is recommended that all standards and samples be assayed in duplicate.
9. Avoid microbial contamination of reagents and buffers. This may interfere with the performance of the assay.

Nori® Rat S100B ELISA Kit DataSheet

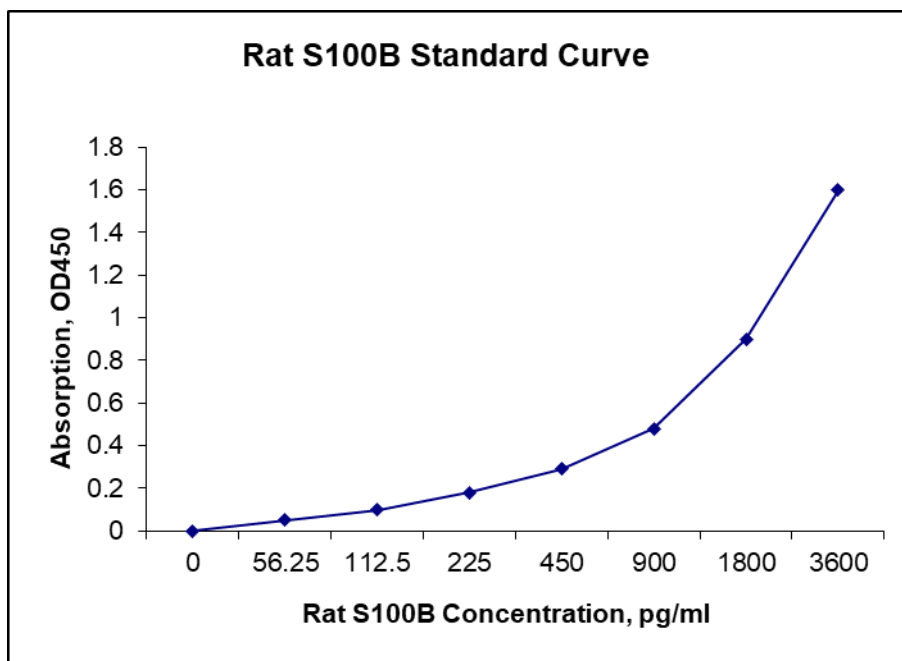
Calculation of Results

Average the duplicate readings for each standard, control, and sample and subtract the average zero (blank) standard optical density.

Create a standard curve by reducing the data using computer software capable of generating a four-parameter logistic (4-PL) curve-fit. As an alternative, construct a standard curve by plotting the mean absorbance for each standard on the y-axis against the concentration on the x-axis and draw a best fit curve through the points on the graph. The data may be linearized by plotting the log of the S100B concentrations versus the log of the O.D. and the best fit line can be determined by regression analysis. This procedure will produce an adequate but less precise fit of the data. If samples have been diluted, the concentration read from the standard curve must be multiplied by the dilution factor.

The Standard Curve

The graph below represents typical data generated when using this Rat S100B ELISA Kit. The correlation coefficient (r^2) is 0.998-1.000. The standard curve should be generated using 4-PL curve-fit to determine concentrations for unknown specimens.





Nori® Rat S100B ELISA Kit DataSheet

Specificity

The following recombinant Rat proteins prepared at 10 ng/ml were tested and exhibited no cross-reactivity or interference.

BMP7, CRP, CCL2, HGF, HSP27, IGF-1, IL-1 β , IFN γ , PDGF, PLA2G7, S100A1, S100A2, serpin E1, TGF β 1, TLR9, TNF- α , VEGF, VEGF R1.

Calibration

This kit is calibrated against a highly purified yeast-expressed recombinant Rat S100B.

Detection Range

56-3600 pg/ml

Assay Sensitivity

10 pg/ml

Assay Precision

Intra-Assay %CV: 5; Inter-Assay %CV: 8

Related products

1. GR239031 96-well microplate sealer plastic, pack of 100
2. GR238016 50 ml Reagent Reservoir, 100/case, 5 packs/case (pack of 20)
3. GR238004 Tissue Culture 96-well Microplate, individually packed, Case of 50
4. GR238002 Microplate 12x8-Well Strip High Binding, Case of 50
5. GR238003 Microplate 12x8-Well Strip Medium Binding, Case of 50
6. GR238032 42592 Costar Stripwell Microplate 1 x 8 Flat Bottom, High Binding, Case of 100
7. GR238001 468667 Thermo Microplate 12x8-Well Strip Nunc Maxisorp F8, Case of 60
8. GR238019 1.5 ml Microcentrifuge tube with screw cap and free-standing, pack of 500

DECLARATION

THIS REAGENT IS FOR IN VITRO LABORATORY TESTING AND RESEARCH USE ONLY. DO NOT USE IT FOR CLINICAL DIAGNOSTICS. DO NOT USE OR INJECT IT IN HUMANS AND ANIMALS.

**FOR LABORATORY RESEARCH USE ONLY
NOT FOR USE IN HUMANS AND ANIMALS**



Nori® Rat S100B ELISA Kit DataSheet

Troubleshooting Guide

Problem	Possible causes	Solution
Poor standard curve	<ul style="list-style-type: none"> • Inaccurate pipetting • Insufficient vortexing • OD₄₅₀ too high for the high standard point • Air bubbles in wells. • Standard defect or not fully recovered 	<ul style="list-style-type: none"> • Check pipette calibration and ensure equal dispensing. • Vortex 30 sec for each of standard dilution steps and vortex again (10 sec) before pipetting to the 96-well plate. • Reduce substrate incubation time • Remove air bubbles in wells by pipette tip. • Change a standard vial or spin down the vial before reconstitution
Low signal	<ul style="list-style-type: none"> • Improper preparation of reagents and storage • Too brief incubation times • Inadequate reagent volume or improper dilution • Standard defect and sample overdiluted 	<ul style="list-style-type: none"> • Briefly spin down vials before opening. Reconstitute the powder thoroughly. Proper storage of plate and strip and detection antibody after first usage as shown in the datasheet. Microplate shaker may improve signals. • Ensure sufficient incubation time including substrate incubation. Increase sample incubation to 2 hours. • Change a Standard vial. Sample undilute or less dilution
Overflow in the standards	<ul style="list-style-type: none"> • Substrate incubation too long • Air bubbles in wells 	<ul style="list-style-type: none"> • Observe the color development every 1-2 mins and reduce substrate incubation time. • Stop the reaction by adding 50 µl of Stop Solution when it turns to dark blue in the highest concentration of standard wells. • Remove air bubbles in wells
Large CV	<ul style="list-style-type: none"> • Inaccurate pipetting and mixing • Improper standard/sample dilutions. • Air bubbles in wells. • Microplate reader out of calibration 	<ul style="list-style-type: none"> • Check pipettes and ensure the pipette is calibrated properly. • Ensure accurate pipetting and thorough mixing and equal dispensing. Wet tips before pipetting. • Use reverse, instead of forward, pipetting. • Use the correct dilution buffers • Remove air bubbles in wells by pipette tip. • Calibrate the microplate reader properly
High background	<ul style="list-style-type: none"> • Reagent reservoir issue • Plate is insufficiently washed and air bubbles in wells. • Contaminated Assay Buffer • Pipet tip contaminated 	<ul style="list-style-type: none"> • Use a new reagent reservoir for Substrate Solution. • Increase wash to 4 times before adding substrate and ensure plate washer functions normally. Remove air bubbles in wells by pipette tip. Use squirt bottle for washing. • Make fresh Assay Buffer and wash thoroughly. • Use new pipette tips for blank wells.
No signal detected	<ul style="list-style-type: none"> • The procedure was misconducted. • Failures of spin down the contents in Detection Antibody and Standards. • Failure of Substrate or HRP • Samples overdiluted 	<ul style="list-style-type: none"> • Ensure the step-by-step protocol. Spin vials of Detection antibody and Standard to complete recover the content. • Mix 100 µl of Substrate with 0.5 µl HRP and deep blue color should develop in 2 min. • Try a new standard vial and use positive control. • Try not dilute samples
Low sensitivity	<ul style="list-style-type: none"> • Improper dilutions of standards • Improper storage of the ELISA kit 	<ul style="list-style-type: none"> • Ensure accurate and thorough dilutions of standards at each step. • Store detection antibody at -20°C after reconstitution, others at 4°C. Keep substrate solution protected from light.